

Charging Cases



+49 7321 488 7819 (Globe)
+971 4 457 8544 (MENA)



info@formcase-international.com



www.formcase-international.com



Made in Germany



Formcase GmbH
Moerikestraße 5
89564 Nattheim
Germany

HQ Formcase International
Damac XL Tower 1001
Business Bay, Dubai
United Arab Emirates

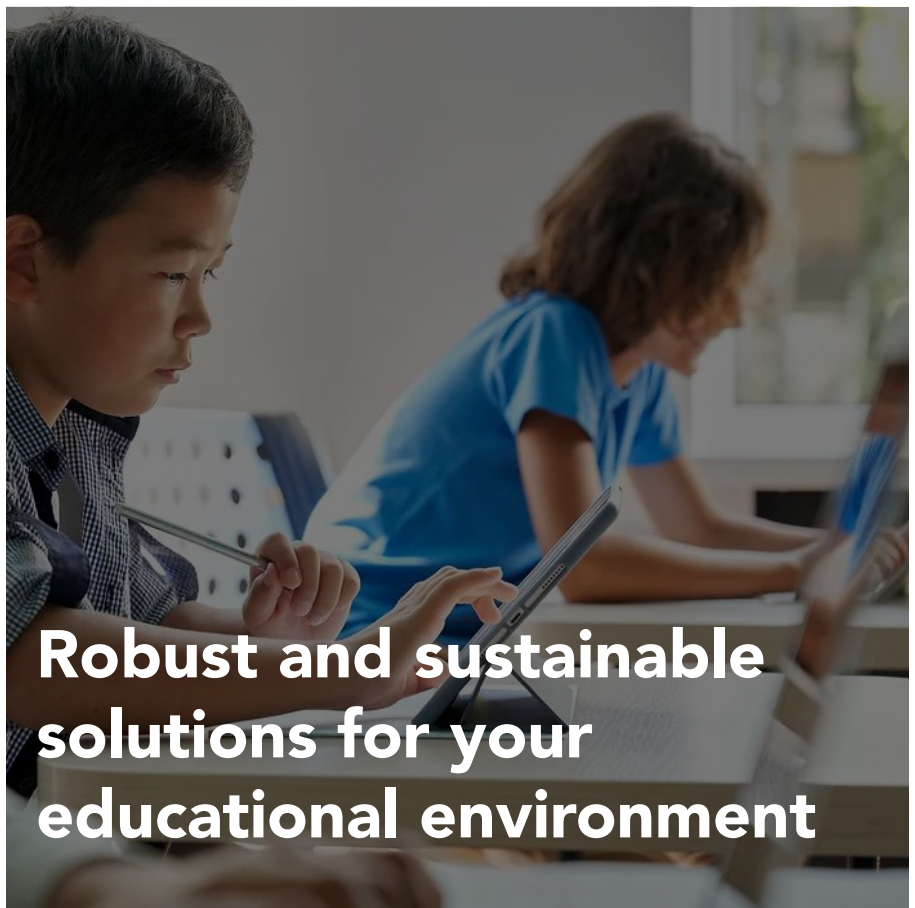


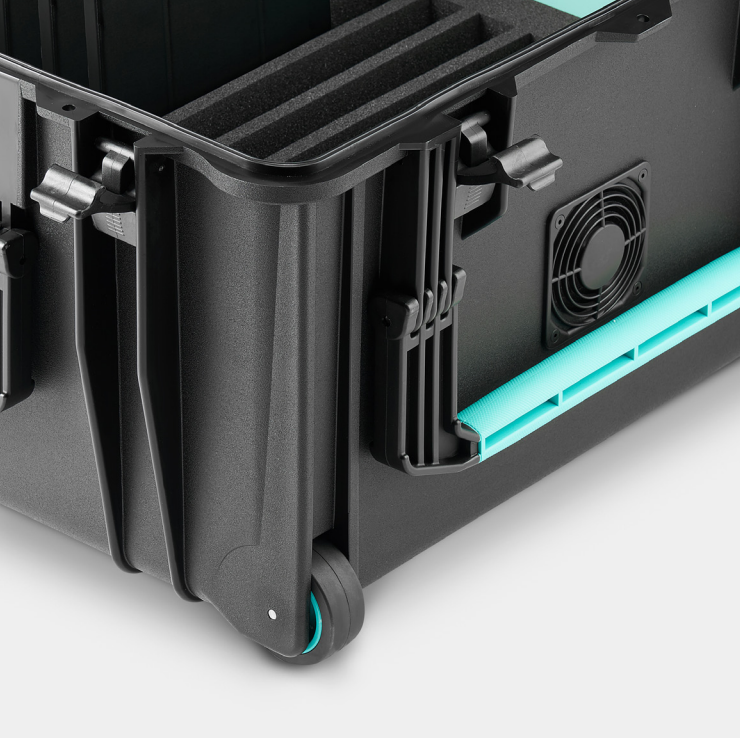
Scan me

TransformerCase T16LX - AC-Version

Charge Only! For up to 16 devices - Max. 15,6"

Article number / SKU: TC16LX





2 smooth-running wheels (built in) with bottom slide-system

Trolley system; extendable and replaceable handle with built-in fuse

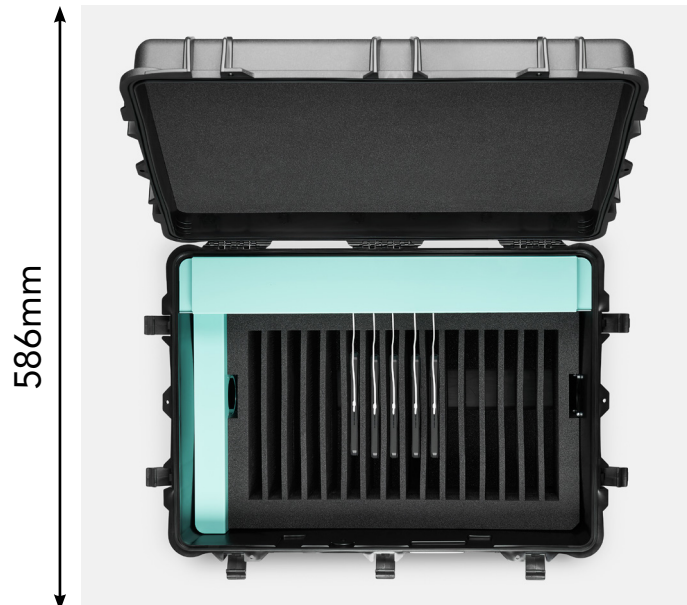
Integrated power sockets/outlets for using the original power supply adapters. Flexible cable management thanks to innovative structure.



What does „AC-Version“ mean?

As an entry-level variant, we recommend the socket solutions. The use of the original power supply adapters enables flexible usage of devices of any kind. The integrated high-performance socket outlets ensure a smooth charging process.

Example
Foam
Illustration



810mm

Technical specifications

TransformerCase T16LX - AC-Version

Charge Only! For up to 16 devices - Max. 15,6"

Example
Foam
Illustration



Max dimensions per Slot:

380 x 270 x 23mm

Foam free of charge individually customizable and suitable for tablets incl. protective cover

The best thing to do is to give us your dimensions and our design team will find the right case for you with the help of our CAD programme. Generally, additional storage compartments such as a laptop compartment etc. can also be milled in.

Article number / SKU: TC16LX

Dimensions (L/W/H)	Length 810 x Width 586 x Height 388mm
Weight	19,8 Kg
Max. Dimensions per Slot	Length 380 x Width 23 x Height 270mm
Security	7 integrated and recessed locking clips Device for padlock (Abus combination lock optionally available)
Cooling	Active cooling system; max. 31dBA, Air flow: 39m ³ /h
LED Charging Status Indication	Nein
Charging Power / Current	Integrated socket / outlet strips (2x 8-way) 10A - 100 - 240 V - 50/60 Hz Integrated On/Off - (I/O) switch
Synchronisation	No
Data Transfer	No
Transport	2 integrated smooth-running wheels (built in) with bottom slide system Strong handle with fold-out system with integrated safety fuse for easy transport Carrying handles on both sides and in the front (all handles are recessed)
Protective Cover	For up to 16 devices with max. 15,6"
Device Compatibility	Apple iPads + Android Tablets + Windows Devices + MacOS Devices
Connections Inside + Outside	Outside: IEC Socket + optional RJ45 connection for access point
Labelling Option	Device on the closure through transparent panel
Cable Management	Easy2connect Management - Wiring management system using the original cables
Material	Polypropylene + glass fibre composite
Delivery Scope:	1x 2m Power cord - (Version depending on the country) 1x Manual 1x Manual for cable management
Applied Standards	DIN EN 55022 / DIN EN 61140 / DIN EN 55024 / DIN EN50581 / DIN EN62368-1
Certificates	CE / RoHS / REACH
Customs Tariff Number	42021250
Warranty	1 year manufacturer's warranty (Warranty extension optionally available)
Country of Manufacture	Germany